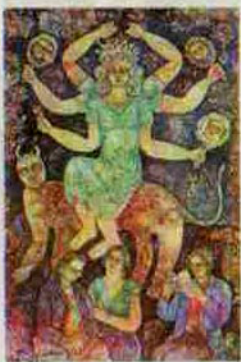


exhibi



● Dali's Elephant London

You don't need to know that Salvador Dali designed an ashtray for Air India, or that he was given an elephant by way of thanks, to see the link this show proposes between surrealism and Indian art. The collage of man and beast, and emphasis on sex and the subconscious in works here might describe European surrealism or Indian mysticism. Sakti Burman (work pictured) mines childhood memory and medieval romance for dreamy paintings of flying elephants and Dali, while Jogen Chowdhury conjures a disorienting nightmare in his drawing of a man and his monstrous "other". It may not be a direct cultural exchange, but the show's intriguing premise gives art history a playful shake. ss

Aicon Gallery, W1, to 4 Sep

STEFAN ALTENHUEBER, EDUARDO GATEGA ESTUDIO FOTO, HAZEL CHILIMOUNDO

● J

Your
Padd
impl
Para
of to
the v
depi
worl
Trun
bord
like
With
utop
lobst

● I

The
renc
artis
exhi

● K

You
from
Mor
deca
proj
mai
the
cou
a pa
siti
earl
in p
for i